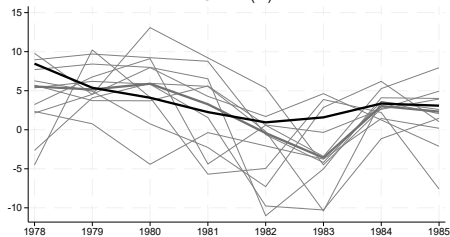
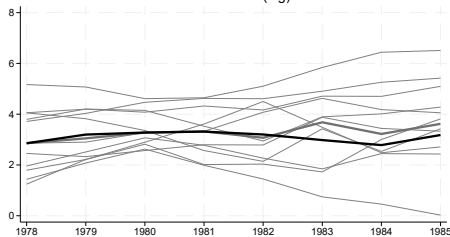


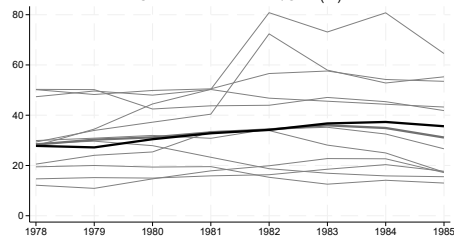
Growth (%)



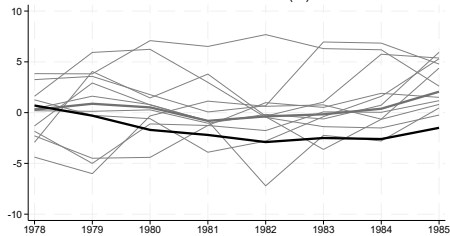
Inflation Rate (log)



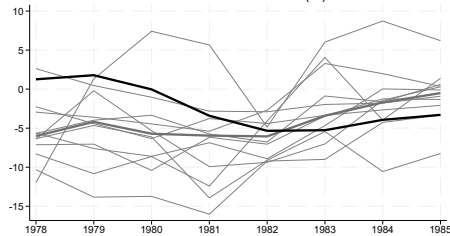
Credit to the Priv. Sect./GDP (%)



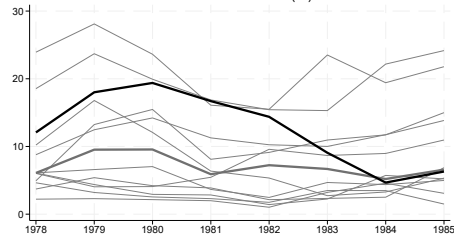
Prim. Balance/GDP (%)



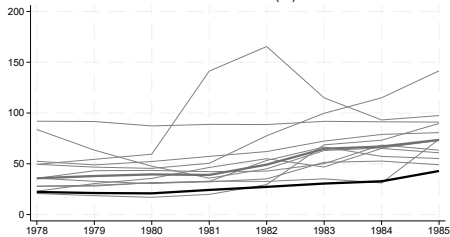
Curr. Acc. Balance/GDP (%)



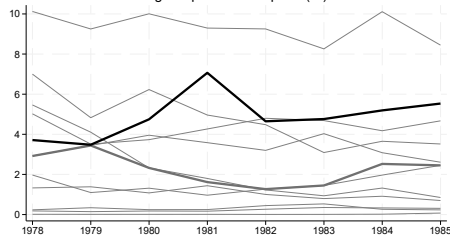
Intl. Resevres/GDP (%)



Ext. Debt/GDP (%)



Agr. Exports/Tot. Exports (%)



Manuf. Exports/Tot. Exports (%)

